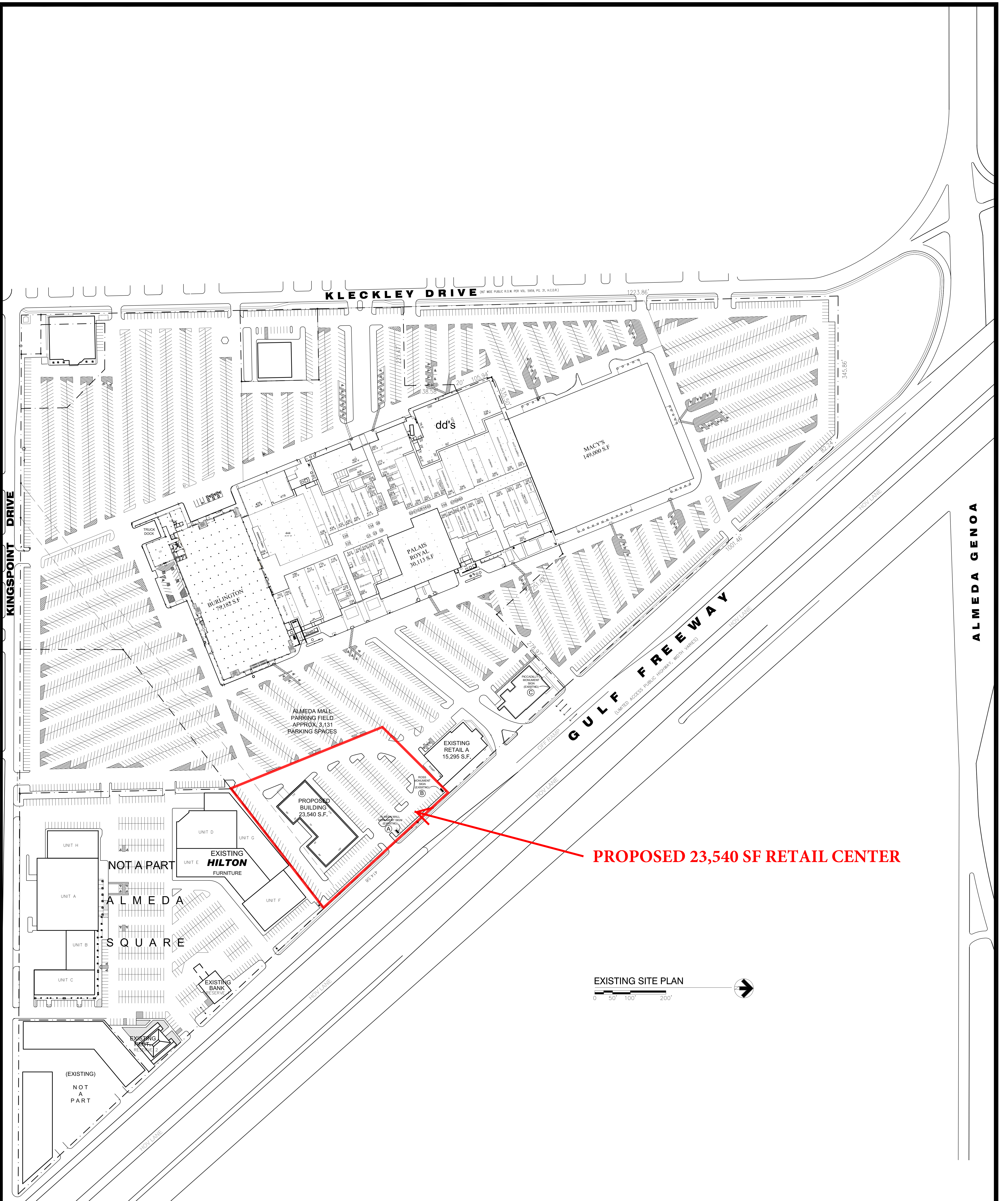


THE MALL IS CURRENTLY OVER 89% OCCUPIED. MANY OF THE SPACES SHOWN AS SF AVAILABLE ARE CURRENTLY OCCUPIED, BUT WE HAVE THE RIGHT TO RELOCATE OR REPLACE THEM TO COMPLETE OUR REMERCHANDISING PLAN.





PROPOSED 23,540 SF RETAIL CENTER



March 28, 2017
LEASE EXHIBIT
 a master schematic development plan for

Alameda Mall

I.H. 45 @ Alameda Genoa
Houston, Texas

exclusive leasing
 by



a development
 by



THIS DRAWING IS FOR PRESENTATION PURPOSES ONLY. ANY AND ALL FEATURES, MATTERS AND OTHER INFORMATION DEPICTED HEREON OR CONTAINED HEREIN ARE FOR ILLUSTRATIVE MARKETING PURPOSES ONLY. ARE SUBJECT TO MODIFICATION WITHOUT NOTICE. ARE NOT INTENDED TO BE RELIED UPON BY ANY PARTY AND ARE NOT INTENDED TO CONSTITUTE REPRESENTATIONS AND WARRANTIES AS TO THE SIZE AND NATURE OF IMPROVEMENTS TO BE CONSTRUCTED (OR THAT ANY IMPROVEMENTS WILL BE CONSTRUCTED) OR AS TO THE IDENTITY OR NATURE OF ANY OCCUPANTS THEREOF.

